

GOOGLE EARTH® INTEGRATION

'Real time location of sites when actioning alarms'

OVERVIEW

The support for Google Earth® is implemented in GMS 4.0 as part of the alarm management application. Google Earth® allows the operator to see online geographical and satellite maps of the site for which he/she is processing an alarm event. The capability simplifies for the operator to instruct emergency units to site by having the location maps activated with the Operator dialogue box.

The Google Earth® support in GMS 4.00 is available in two different versions:

1. Google Earth® API - A full integration with the GMS Site information docking pane.
2. Google Earth® application feature - The Google Earth® application accessible from a hyperlink in the Site information docking pane.

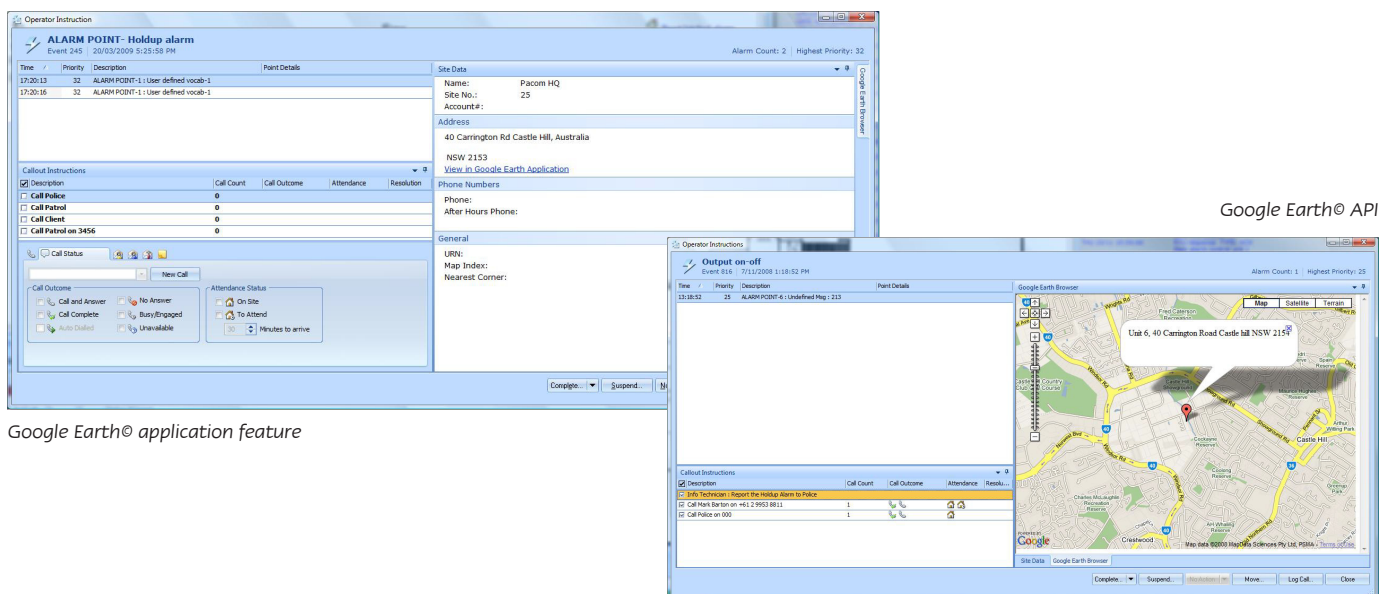
With the Google Earth® API integration, GMS will automatically display the corresponding Google map with the site in a separate geographical map view window. The map view window is fully integrated in the Operator Instruction dialog. The operator can use Google Maps controls to zoom in/out, pan/tilt and change the view from Map to Satellite or Terrain. The surrounding docking pane is resizable and it provides both horizontal and vertical scroll bars. Also, the whole Operator Instructions dialog is resizable.

The full Google Earth® API integration is available through a separate license.

The Google Earth® application is accessible from a separate hyperlink in the Site Info docking screen. This dialog is created and displayed when the user actions an alarm event.

When the user clicks on the hyperlink, the Google Earth® application is started as a separate Windows application, showing the site's location on the Google Earth® map.

The Google Earth® application feature is available free of charge with GMS 4.00.



Google Earth® application feature